

# USB - Nest

## User's Manual

**USB**  
**USB**

UNIVERSAL SERIAL BUS



**Rockfire**  
A ROCK OF SOLID QUALITY

RM-203

## ● Contents

---

1. Introduction .....	1
2. Package Contents .....	2
3. System Requirements .....	3
4. Hardware Overview .....	5
5. Installation .....	6-7
6. Set up for RM-203 under Win98 .....	8-12
7. Operation Instructions .....	13-14

## 1. Introduction

---

Thank you for choosing the Rockfire USB-Nest joystick converter (RM-203), it is a revolutionary converter extends from PC-USB port to support all conventional analog game controllers and in accordance with the rules of the USB Spec. V1.0 and passed necessary tests stipulated on Chapter 9 on USB Specification.

\*RM-203\* built with a unique 4-mode selectable switch for maximum compatibility and flexibility, enables you to convert all of your conventional analog joysticks to powerful USB joysticks with simply one touch.

We sincerely welcome users to send us their suggestions and enable Rockfire to design even more satisfactory products. If you have any questions on use or require any help please contact us at any time through our Internet links.

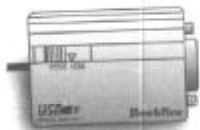
E-mail: [service@rockfire.com.tw](mailto:service@rockfire.com.tw)

Website: <http://www.rockfire.com.tw>

© 1993 ROCKFIRE is the registered trademark and RM-203 (USB-Nest) is a tradename of Padix co., Ltd. Other brand names are the trademarks of their respective owners.

## 2. Package Contents

1. RM-203 (USB-Nest Joystick Converter) x 1



2. Diskette x 1



3. User's manual x 1

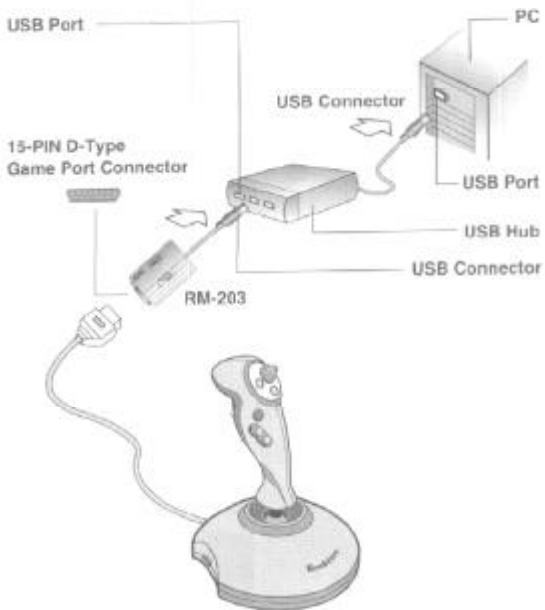


### 3. System Requirement

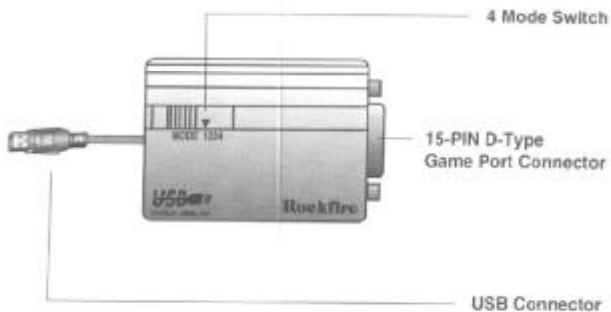
---

1. IBM PC 486/586 or Pentium II compatibles.
2. USB ROOT HUB / HUB.
3. USB supported operation system. Recommend to work under Windows 98 platforms.

## Installation Diagrams



## 4. Hardware Overview



## 5. Installation

1. Plug your 15-PIN D-type joystick connector to the other side of the RM-203
2. Plug RM-203 (USB Nest Joystick converter) connector to USB HUB.
3. The operating system will detect the new hardware installation and "Add New Hardware Wizard" will automatically search new devices for USB Human Interface Device. Click "Next"



4. "What do you want Windows to do?"  
-- Select "Search for the best driver for your device (Recommend)" and then click "Next"



5. Insert the diskette enclosed to your Floppy Disk Drive and Windows will search for new drivers in its driver database. Click "Next"



6. Windows will install the best driver for this device, click "Next" and the system will copy the files from your hard drive.





7. Insert your Windows 98 disk to the CD-ROM, and then click "OK"



8. Indicate the path where your Windows 98 driver is located and click "Finish"



9. When the installation procedures are finished, please proceed calibration and test for your game pad. (Refer to Chapter 6. Set up for RM-203 under WIN98)

## 6. Set up for RM-203 under Win98

Entering Windows 98 and calibrate your game pad according to the following steps:

- A. Select Start on the very left bottom of your Windows screen, then choose Setting / Control Panel



- B. Select "Game controllers"



- C. If your joystick has been properly installed, you will see "ROCKFIRE USB Adaptor Mode 1,2,3,4" (Mode will be verified, depends on mode you choose) and the status is shown "OK" under the Game Controllers screen. Select "Properties" to complete the calibration for your joystick.



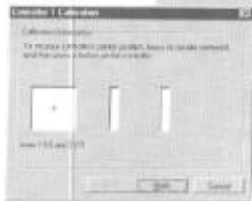
### NOTE

1. If "Rockfire USB Adaptor Mode 1, 2, 3 or 4" is not shown on screen, unplug game pad connector from USB HUB and plug it to the hub again.
2. ID of controllers can be verified under "Advanced" Tab. Identification sequence of the game controllers depend on the sequence of plugged. In other words, you may verify the game controllers' ID by unplugging all the controllers on your Hub and plug again according to the sequence you preferred.

D. Click "Calibrate"



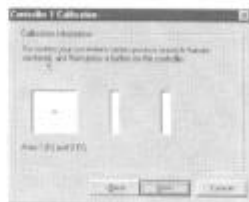
E. When the calibration screen appears, follow the on screen instructions to complete the calibration for your joystick/game pad.



1) Set the joystick's center position.... Press "Button A" .



2) Set the range of motion .... turn the grip (or move the Direction Pad) 2-3 turns then press "Button A" .



- 3) Repeat step (1) and press "Button A"



- 4) Calibrate the throttle's maximum and minimum settings....Press "Button A"



- 5) Calibrate the rudder's maximum and minimum settings....Press "Button A"



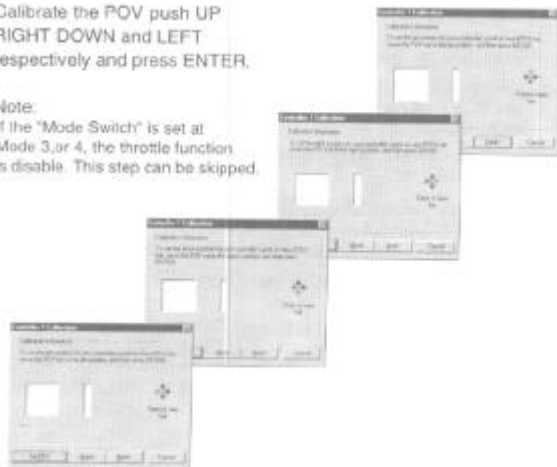
**Note:**

If the "Mode Switch" is set at Mode 1, 3, or 4, the rudder function is disabled. This step can be skipped.

- 6) Calibrate the POV push UP  
RIGHT DOWN and LEFT  
respectively and press ENTER.

Note:

If the "Mode Switch" is set at  
Mode 3, or 4, the throttle function  
is disable. This step can be skipped.



- 7) Click "Finish"



- 8) Click on "Test" and the test screen appears please press all the buttons on your joystick/ game pad then turn the grip (or move the D-Pad) to test the movement of direction for your joystick/game pad (and turn the POV (Hat Switch) for UP RIGHT DOWN and LEFT directions.) Check whether they are workable. If they function well press "OK".



If they don't work well please repeat the calibration and test procedures.

- 9) Return to the main screen of game controllers, press "OK"
- 10) Finally, start up the game software. Refer to the instructions in the game's manual in order to complete the necessary game control settings.

## 7. Operation Instructions

USB-Nest joystick converter (RM-203) is designed to upgrade all the conventional PC Game port analog game controllers to be the powerful USB joysticks. It is incorporated with 4-mode switch.

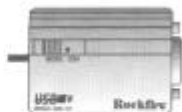
### 7-1) Sequence before switching

Before switching from one mode to another, please follow the following steps:

- Connect your 15-PIN D type joystick/joyypad to the other side of your RM-203
- Switch to the mode of your new choice. (Mode 1, 2, 3 or 4)
- Unplug the USB connect of RM-203 to the USB HUB.
- Plug USB connector to the USB HUB, then you are ready for the new mode operation.

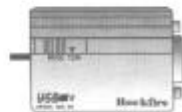
### 7-2) Mode switch

- Use Mode 1, as shown below, if the controller's selection is, or compatible with **TM-FCS** in your game software.



In this mode, the TM-FCS has all the functions it incorporated. If you prefer controlling rudder by your feet, simply connect Rockfire "Hybrid Pedal/Pro" (QF-168ip) between your joystick and RM-203 (USB-Nest joystick converter), your joystick is immediately enhanced to an accurate 3D flight type stick with an extra Rudder function.

- Use Mode 2, as shown below, if the controller's selection is, or compatible with **CH FLIGHTSTICK PRO** in your game software.



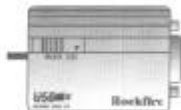
In this mode, the CH FLIGHTSTICK PRO has all the functions it incorporated. If your joystick does not have rudder function, or you prefer controlling rudder by your feet, simply connect Rockfire "Hybrid Pedal/Pro" (QF-168ip) between your joystick and RM-203 (USB-Nest joystick converter), your joystick is immediately enhanced to an accurate 3D flight type stick with an extra Rudder function.

- C. Use Mode 3, as shown below, if the controller's selection is "2-4 axes, 4 buttons" joystick in your game software.



By selecting this mode, you have upgraded your joystick to be a powerful USB game controller. If your joystick does not have rudder function, or you prefer controlling rudder by your feet, simply connect Rockfire "Hybrid Pedal/Pro" (QF-168ip) between your joystick and RM-203 (USB-Nest joystick converter)

- D. Use Mode 4, as shown below, if the controller's selection is "2 axes, 8 buttons" joystick in your game software.



By selecting this mode, you have upgraded your game controller to be a powerful USB game controller.